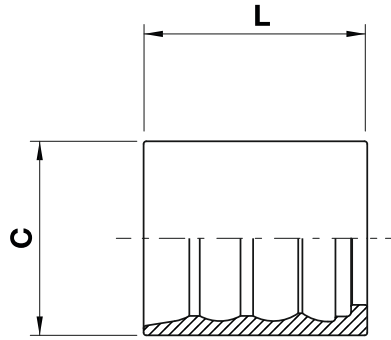


Two piece fittings - Universal series for wire braided and 4 spiral hydraulic hoses

S0210

Skive ferrule

R1-R2 Soymalı soket



code	ø hose			C		L	
	dn	inch	size	mm	in	mm	in
S0210-04	6	1/4	04	19,0	0,75	28,0	1,10
S0210-05	8	5/16	05	20,0	0,79	28,6	1,13
S0210-06	10	3/8	06	23,0	0,91	30,0	1,18
S0210-08	12	1/2	08	27,0	1,06	32,0	1,26
S0210-10	16	5/8	10	32,0	1,26	38,0	1,50
S0210-12	19	3/4	12	36,0	1,42	41,5	1,63
S0210-16	25	1	16	43,0	1,69	47,0	1,85
S0210-20	31	1.1/4	20	52,0	2,05	57,0	2,24
S0210-24	38	1.1/2	24	57,0	2,24	76,0	2,99
S0210-32	51	2	32	70,0	2,76	80,0	3,15

Please refer to our crimping charts for application details of each size

Skive ferrule for: EN 853 1SN / SAE 100 R1AT / EN857 2SC / SAE 100 R16 / SAE 100 R17 / SAE 100 R19